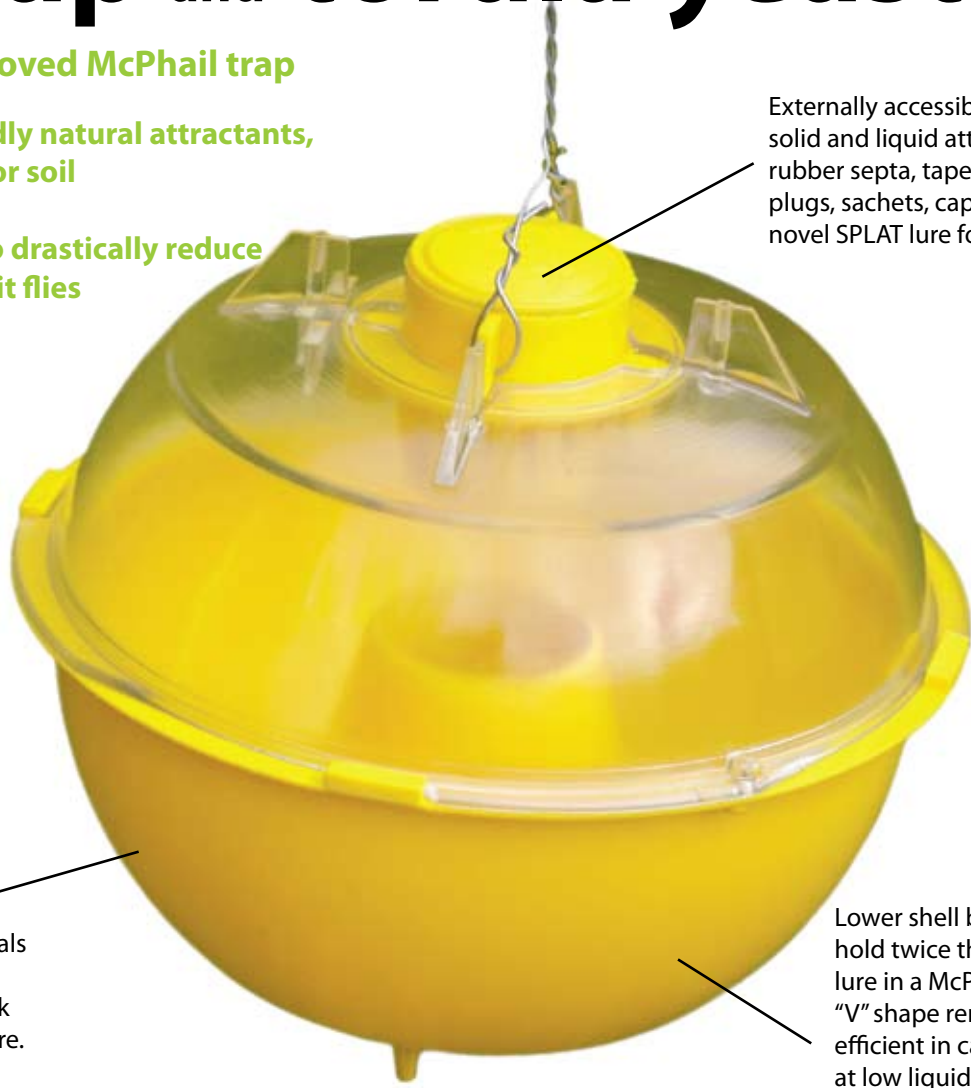


# ball trap and torula yeast

## ISCA's new and improved McPhail trap

- **Environmentally friendly natural attractants, no contact with plant or soil**
- **Scientifically proven to drastically reduce damage from olive fruit flies**

Externally accessible receptacle for solid and liquid attractants: plugs, rubber septa, tapes, wafers, cotton plugs, sachets, capsules, and ISCA's novel SPLAT lure formulation.



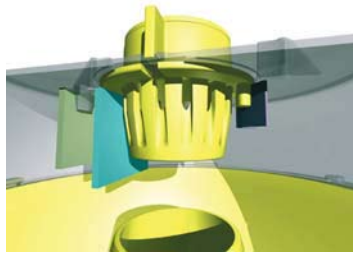
High quality UV resistant polycarbonate material:

Other types of plastic materials such as plastic bottles can degrade and eventually crack under prolonged UV exposure.

Lower shell basin designed to hold twice the volume of liquid lure in a McPhail trap; basin's "V" shape renders the trap efficient in capturing flies even at low liquid levels; available in yellow, red, blue, black and green.



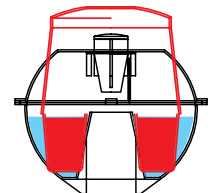
Torula yeast bait pellets: These are the same pellets used by USDA as an attractant for fruit fly management



Unique basket with five options to attach lures, liquids and insecticides



Cost-effective version without lure compartment



Compared to similar traps in the market, the ball trap holds twice the volume of attractant solution, resulting in more attractiveness and longer periods between refills

### AT800 Torula Yeast Bait Pellets

Torula yeast in convenient to use pellets, 1 lb ≈ 90 pellets. Use 3 pellets for approximately 1 to 1½ liters of water. Pellets include borax (a natural mineral), which maintains acidity of torula yeast solution at suitable level, and slows down decomposition of captured insects. Olive fruit fly specific instruction sheets are included.



**Field life:** Approximately 4 - 8 weeks. Requires water replenishment due to evaporation.

**Recommended trap:** AR934 Ball Trap.

**Storage information:** Store in air tight bag/container in cool and dry place. Shelf life of 2 years or more.

2 lb package	\$49.90
10 lb package	\$199.90
50 lb drum	\$799.90

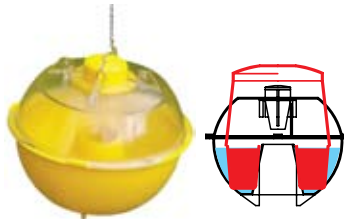
### AT800-K10 Fruit Fly Starter Kit

Starter kit for the management of various fruit fly species, including the olive fruit fly, *Bactrocera oleae* and spotted wing drosophila, *Drosophila suzukii*.

2 lb package + 2 AR934A Ball trap	\$73.90
--------------------------------------	---------

### AR934 ISCA-Ball Trap™ (Improved McPhail Trap)

ISCA's Ball trap™, an improved version of the McPhail trap, is used for trapping a wide variety of fruit flies and other flying insects. The ISCA-Ball trap was developed based on feedback from a wide variety of growers and entomologists regarding the pros and cons of the traditional McPhail trap, which has resulted in improvements in many areas of trap catch and trap maintenance :



- Ability to hold almost twice the volume of liquid attractants (such as torula yeast solution or hydrolyzed protein) compared to the traditional McPhail trap, thus lowering the labor cost of trap maintenance and increasing the duration of trap effectiveness. In addition, due to the greater depth of the plastic trap bottom, liquid lure spillage (for example when there are strong winds that shake the traps) is lower.
- A larger lure receptacle to hold a wider variety of solid and liquid attractants.
- High quality transparent polycarbonate plastic top to improve the ability to count and identify insect species, and to better withstand low level drops without cracking the plastic.
- A bigger and rounder shape, which better mimics a fruit, and better captures the attention of insects; and without sharp angled edges around the trap entrance, the ISCA-Ball trap also enhances the ability of insects to travel into the trap.
- Lower cost version without lure receptacle is available.
- Some insect species are attracted to specific colors. A variety of trap colors are available for the appropriate insect species. Yellow colored trap is recommended for olive fruit flies.

With Lure Receptacle (AR934A) :	
1 - 24	\$13.95
25 - 249	\$12.55
250 +	Contact us
Without Lure Receptacle (AR934B) :	
1 - 24	\$12.25
25 - 249	\$11.05
250 +	Contact us

#### ORDER PLACEMENT, PAYMENT AND DELIVERY INFORMATION

- Normal sales tax applies for sales within California.
- Prices are FOB Riverside, California, shipping fees apply. Delivery cost will be shown in invoice or you may request an estimate. Order is delivered within 14 days after receipt of payment. Please inform us of any special request for delivery, extra charges may apply e.g. for rush deliveries.
- ISCA Technologies' standard terms and conditions of sale apply, which can be viewed at <http://www.iscotech.com/exec/sales.htm> , or you may request that a copy be e-mailed or faxed to you.
- To place your order, please send us your purchase order, or you may place your order online at: [www.iscotech.com/ecommerce/](http://www.iscotech.com/ecommerce/)
- Payment terms : payment in advance.
- Payment options : credit card, check, or wire transfer.
- Typographical errors subject to correction.

• Revised 1/10/2011